



SHINING 3D®

EXXJET

EinScan H2

High Texture Resolution
Handheld 3D Scanner

Hybrid LED &
Infrared Light Source



SHINING 3D

Introducing the EinScan



The EinScan H2 improves on its predecessor with a 5MP resolution texture camera, enhanced accuracy, and 3 infrared VCSEL projectors for more photorealistic textures and better quality data. Its wide scanning area and adjustable working distance make it suitable for various scenes and objects, both small and large, in narrow or wide spaces. The EinScan H2 is an efficient 3D scanning tool that can revolutionize your workflow.

Healthcare and Forensic



Cultural Heritage



Scan H2



Digital Art

Design

Education



Key Features



3 Infrared VCSEL Projectors



Data Acquisition Camera



5MP Texture Camera

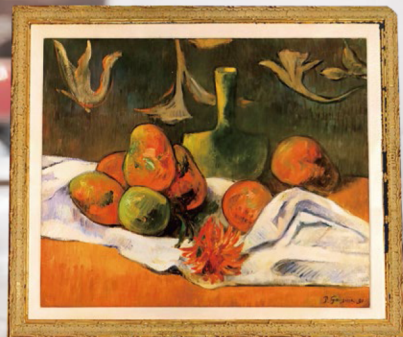


White Light Projector

Photorealistic Texture

5MP Texture Camera

Captures rich, bright colors and clean textures for photorealistic 3D models.



· EinScan H2 Scanned Data



· EinScan H2 Scanned Data

· 3D Printed Figure

Superior Environmental Adaptability

3 VCSEL Projectors

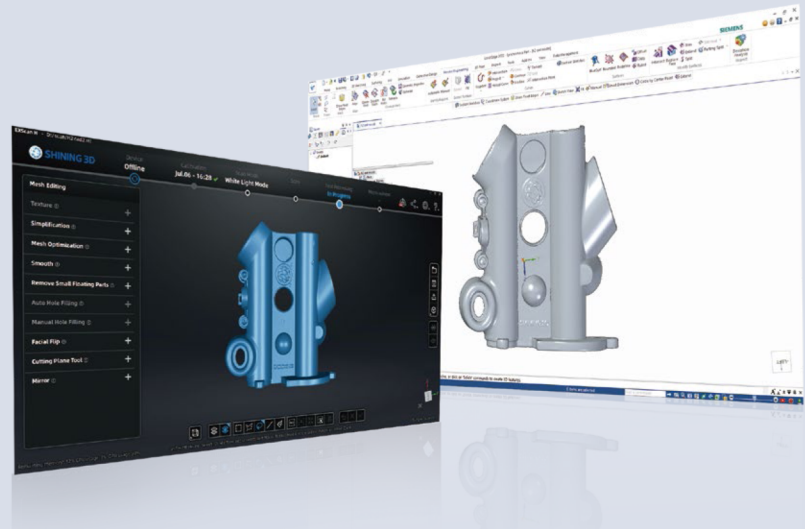
Provide superior material and lighting adaptability, effortlessly handling various surface types and scanning environments.



Hybrid Light Source

Dual light sources improve scanning efficiency. LED light offers fast 3D scanning with accurate, high-quality data.

- Various scenes from small to large
- Scanning speed: 1,200,000 points/s
- Accuracy: Up to 0.05mm
- Point distance: Up to 0.2mm



Infrared VCSEL is ideal for capturing dark surfaces, for human body scanning, and for bright-lit environments.

- ✓ **Dark color objects**
- ✓ **Human body scan**
- ✓ **Outdoor scan**

- Accuracy: Up to 0.1mm
- Point distance: Up to 0.2mm



Ultra-wide FOV and Adjustable Working Distance

Adjustable working distance

Enables working distance adjustment from 200mm to 1500mm, to adapt to narrow or wide scenes and objects of various sizes.

FOV (Field of View) up to 780mm x 900mm

Offers flexibility in scanning volume to capture large-sized objects quickly.

Marker-free scanning

Scans rich geometric features without the hassle of markers.



· EinScan H2 Scanned Data

Optimized for Face and Body 3D Scanning

Flashless infrared technology

Ensures optimal comfort during face and body 3D scanning.

Advanced hair enhancement algorithm

Designed to successfully capture light and dark hair.

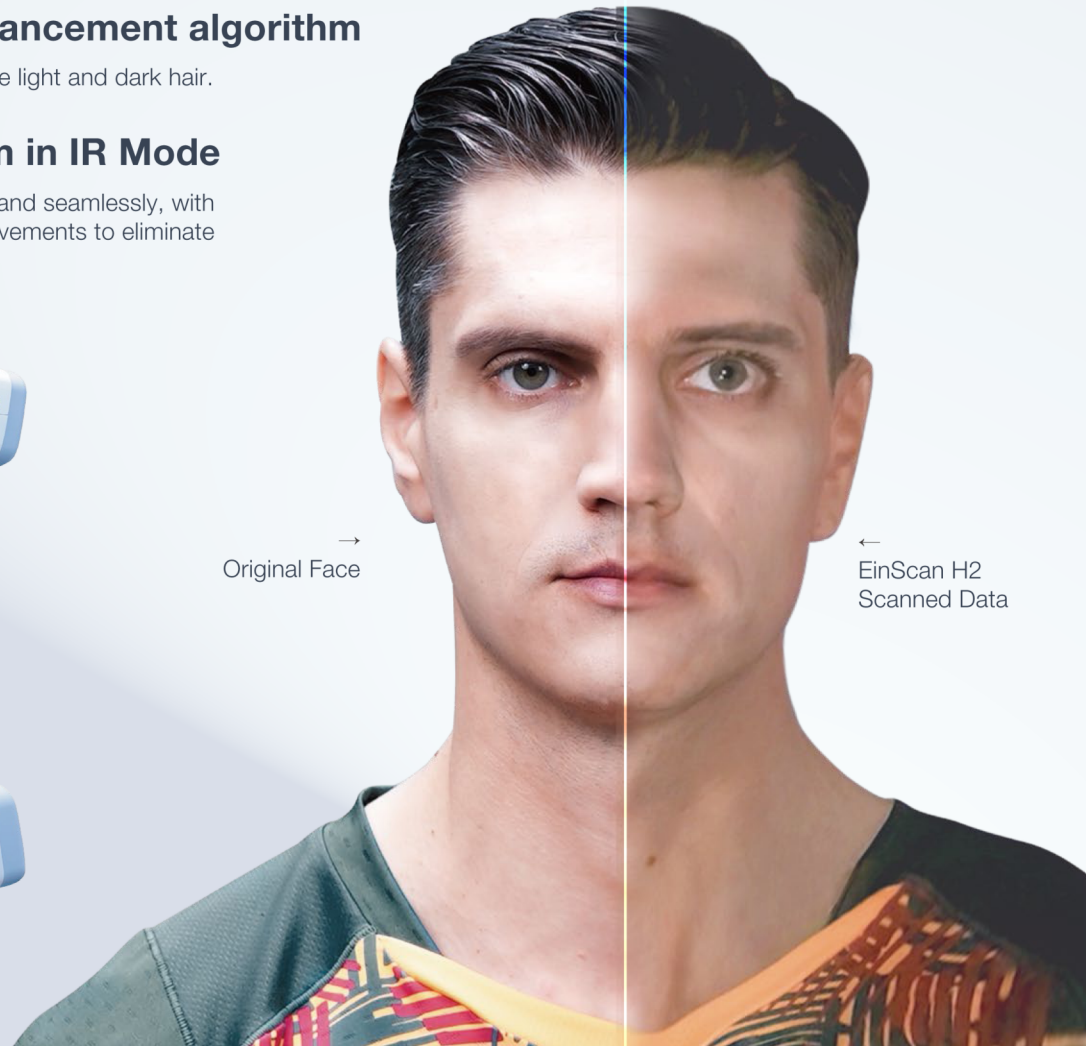
Non-rigid algorithm in IR Mode

Captures 3D body data quickly and seamlessly, with auto-compensation of slight movements to eliminate misalignment risks.



→
Original Face

←
EinScan H2
Scanned Data



User-Friendly Design

Remarkable scanning software

Delivers a professional easy-to-use 3D scanning interface with automated processing, intuitive UI design, and intelligent data quality indicators.



Ergonomic design

The EinScan H2 is portable, easy to grasp, and intuitive to operate.

Develop Your Own Scanning App with EinScan H2 SDK

The EinScan H2 scanning SDK is available and open for customization! Integrate our powerful scanning and data processing into your self-developed software or app.



→
Forensic Science



→
Prosthetics and Orthotics

TECHNICAL SPECIFICATIONS

EinScan H2

| | | |
|----------------------------------|--|--|
| Scan Mode | White Light Mode | IR Mode |
| Light Source | White LED Light, Visible | Infrared VCSEL Light, Invisible |
| Scan Accuracy | Up to 0.05mm | Up to 0.1mm |
| Volumetric Accuracy | 0.05mm ± 0.1mm/m | 0.1mm ± 0.3mm/m |
| Point Distance | 0.2mm–3mm | |
| Best Working Distance | 470mm | |
| Effective working Distance Range | 200mm–700mm | 200mm–1500mm |
| Maximum FOV | 420mm*440mm | 780mm*900mm |
| Scan Speed | 1,200,000points/s | 1,060,000points/s |
| Texture Resolution | 5MP | |
| Align Modes | Markers Alignment, Feature Alignment, Hybrid Alignment, Texture Alignment | Feature Alignment, Hybrid Alignment, Texture Alignment, Global Markers |
| Safety | LED light (eye-safe) | CLASS I (eye-safe) |
| Built-in Color Camera | Yes | |
| Texture Scan | Yes | |
| Included Software | EXScanH; Solid Edge SHINING 3D Edition | |
| Output Formats | OBJ, STL, ASC, PLY, P3, 3MF | |
| Scanner Size | 108 mm*110 mm*237 mm | |
| Scanner Weight | 731.1 g | |
| Operating Temperature Range | 0° C ~ 40° C | |
| Operating Humidity Range | 10% RH ~ 90% RH | |
| Certifications | CE, FCC, ROHS, WEEE, KC | |
| Interface | USB 3.0 | |
| Input Voltage | DC: 12 V, 5.0 A | |
| Recommended Configuration | OS: Win10/11, 64-bit; Graphics card: NVIDIA GTX/RTX, RTX2060 or better; Video memory: ≥6GB; Processor: Intel I7-11700 or better; Memory: ≥64GB | |
| Required Configuration | OS: Win10, 64-bit; Graphics card: NVIDIA GTX1060; Video memory: ≥4GB; Processor: Intel I7-8700; Memory: ≥16GB | |

EinScan H2-EN 20230720-V0.9

Get in touch



#33,Kaustubha, 7th Cross, 1st Main Mathru Layout, Yelahanka,Bangalore KA 560064 IN

+91 63665 73775  www.exxjet.com



SHINING 3D®

